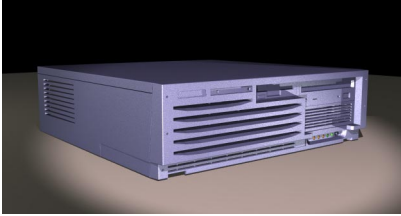


## AlphaServer DS10

### V1.10—11 August 1999

#### Systems and Options Catalog

#### Product Description



The AlphaServer DS10 is based on the Alpha 21264 microprocessor 466 MHz CPU with 2 MB ECC cache. Servers are available in Desktop configurations or can be rackmounted in M-series cabinets with a choice of Tru64 UNIX or OpenVMS operating systems. The AlphaServer DS10 is a low-cost entry level server with enterprise level server features. The DS10 is ideal for ISP/Internet applications, High Performance Technical Computing, software development and replicated site applications, to name a few. The DS10 has a 3U/5.25" form factor which makes it ideal for rackmounting into cabinets to conserve valuable floor space. Integrated on the system motherboard are IDE controller for internal storage, Dual 10/100 BaseT ethernet ports, Remote Management Console, floppy diskette controller, two serial ports, one parallel port, and keyboard and mouse interfaces. A SCSI adapter and a SCSI cable kit are required to support internal SCSI disks and tape.

The AlphaServer DS10 supports five internal storage devices, including a floppy diskette, CD-ROM, and up to three hard disk drives. System supports up to 1 GB of memory and 30GB of internal storage with three 10GB IDE disks.

#### System Ordering Rules

AlphaServer DS10 packaged systems do not include a system disk. Selection of a system disk is mandatory. Users are required to select either an IDE or SCSI disk as the system disk at the time of system order. A PCI SCSI controller and SCSI cable kit are also mandatory selection if a SCSI system disk is chosen.

To order a complete system, select (1) a System, (2) a System Disk, and (3) a SCSI adapter and SCSI cable kit are also mandatory if SCSI system disk is chosen.

#### M-series Cabinet Enclosures

M-series Cabinet Enclosures are available in three sizes: 43 inch, 67 inch, and 79 inch. See Cabinet Configuration Chart for maximum system and StorageWorks shelves supported in M-series Cabinet Enclosures.

#### High Availability Features

The AlphaServer DS10 integrated Remote Management Console (RMC) features significantly enhance the ability to remotely manage and diagnose system conditions. The RMC allows a remote operator to monitor server voltages, temperatures, and fan, as well as manipulate the server (Power On/Off, reset, halt). An auxiliary regulator powers the RMC in the main power system that allows systems to be remotely interrogated even if systems are turned off or shut down. In the event of an alert condition, the RMC can be set up to automatically dial a user definable pager phone or another system to make a remote operator aware of the alert condition.

Server WORKS Manager provides advanced server and network management capabilities and is supplied with all AlphaServer systems. Simple Network Management Protocol (SNMP) enables information to pass from the managed system console for Tru64 UNIX and Open VMS systems. Using ServerWORKS, the system manager may build and view topological maps of the network. Detailed server information is viewable, including system, network, storage, and environmental information. Alarms may be set against critical system parameters and events. All AlphaServer systems are supplied with management tools to complement ServerWORKS Manager.

Compaq and the names of Compaq products referenced herein are either trademarks and/or service marks or registered trademarks and/or service marks of Compaq. DIGITAL is a Trademark of Compaq Computer Corporation. Microsoft, Windows, Windows NT, SQL Server, Office and BackOffice are either trademarks or registered trademarks of Microsoft Corporation. Intel and Pentium are registered trademarks of Intel Corporation.

Other product and company names mentioned herein may be trademarks and/or service marks of their respective owners.

---



---

## Step 1—AlphaServer DS10 Desktop and Rackmount Systems

### AlphaServer DS10 Desktop and Rackmount Systems include:

- Alpha microprocessor 21264 466 MHz CPU with 2 MB onboard ECC cache
- Onboard IDE controller for internal storage
- Onboard dual 10/100 Base T Ethernet ports
- Four PCI expansion slots
  - Three 64-bit PCI slots
  - One 32-bit PCI slot
- 4 DIMM memory slots support 2 memory kits
- Five storage bays
  - One diskette drive bay with 1.44 MB floppy drive
  - One CD-ROM drive bay with 600 MB CD-ROM
  - One 5.25-inch x 1.6-inch removable media bay or 3.5-inch x 1-inch hard disk drive bay
  - Two 3.5-inch x 1-inch hard disk drive bays
- Two serial ports
  - One serial port with full duplex asynchronous modem control
  - One RMC dedicated serial port with full duplex asynchronous modem control
- One bi-directional enhanced parallel port
- PS/2 style keyboard port and mouse port
- 300 W (120/240V, 60/50 Hz) power supply
- 3 button mouse
- US English keyboard (North American orders only)
- US power cord (North American orders only)
- US English documentation
- Integrated Advanced Server Management features, including ServerWORKS Manager kit.
- Factory installed software
  - Tru64 UNIX Unlimited User license, Server Extension license, Internet AlphaServer System software kit, or
  - OpenVMS base license with System Manager license, Enterprise Integrated Package
- Hardware Warranty: Three-year on-site hardware with next business day response
- Software Warranty: 90 day SPD conformance with advisory telephone support for TRU64 UNIX and OpenVMS
- Rackmount/Desktop kit included

---



---

### Step 1a—Tru64 UNIX Systems

- Systems include pre-installed Tru64 UNIX, Base license, Unlimited User license, Server Extension license and Internet Access Server Software (IASS) media and license.
- Systems include factory installed software (FIS) Tru64 UNIX V4.0F on hard disk drive.
- Systems ordered in North America include a 104/105 key PC style US English keyboard and 120 V power cord.
- Selection of a country-specific keyboard and power cord is mandatory for all non North American orders.
- Tru64 UNIX media and documentation must be ordered separately.

Order Number	Memory	Hard Disk Drive	Ethernet	Graphics	Monitor
DA-PB10A-AB	128 MB	Mandatory	Onboard	Optional	Optional
DA-PB10A-AC	256 MB	Mandatory	Onboard	Optional	Optional
DA-PB10A-AD	512 MB	Mandatory	Onboard	Optional	Optional

**Step 1b—OpenVMS Systems**

- Systems include pre-installed OpenVMS, Base license, and Enterprise Integration Package.
- Systems include Factory Installed Software (FIS) OpenVMS V7.1-2 on the hard disk.
- OpenVMS variants ordered in North America include a 108-key, VT style US English keyboard and 120 V power cord.
- Selection of a keyboard and power cord is mandatory for all non North American orders.
- OpenVMS media and documentation must be ordered separately.

Order Number	Memory	Hard Disk Drive	Ethernet	Graphics	Monitor
DY-PB10A-AB	128 MB	Mandatory	Onboard	Optional	Optional
DY-PB10A-AC	256 MB	Mandatory	Onboard	Optional	Optional
DY-PB10A-AD	512 MB	Mandatory	Onboard	Optional	Optional

**Step 1c—Mandatory Options**

- Selection of a System Disk drive is mandatory. Systems support a total of three internal disk drives.
- System supports 3.5-inch x 1-inch internal drives only.
- A SCSI adapter and SCSI cable kit are required for internal SCSI disks and tape.

**IDE Disks**

Order Number	System Disk
3X-RE56A-AA	10 GB 5400 RPM IDE hard disk drive

**SCSI Disks**

Selection of a SCSI adapter and a SCSI cable kit are mandatory for SCSI disk drives.

Order Number	System Disk
DS-RZ2DA-WA	9.1 GB 7200 rpm Ultra SCSI hard disk drive
DS-RZ1DD-WA	9.1 GB 10,000 rpm Ultra SCSI hard disk drive
DS-RZ2EA-WA	18 GB 7200rpm Ultra SCSI hard disk drive

**SCSI Adapters**

Order Number	SCSI Adapter
KZPBA-CA	PCI-based one port UltraSCSI Single-ended adapter
KZPCM-DA	PCI-based two port UltraSCSI Single-ended adapter and 10/100 Mbit Ethernet Combo adapter
KZPAC-AA	PCI-based one port UltraSCSI RAID controller ( <i>Currently qualified on OVMS systems only</i> )
KZPAC-CA/CB	PCI-based three port UltraSCSI RAID controller ( <i>Currently qualified on OVMS systems only</i> )

**SCSI Cable Kit**

Order Number	SCSI Cable Kit
3X-BN50A-01	SCSI cable kit (includes SCSI cable and SCSI LED cable)

**Step 2—Memory**

- Systems include one memory kit.
- Systems support a maximum of two memory kits. Each kit includes two industry standard DIMMs with ECC support.
- Systems support maximum of 1 GB memory.

Order Number	Memory
3X-MS310-AA	64 MB, Two 200 pin, 100 MHz, 32 MB DIMMs
3X-MS310-BA	128 MB, Two 200 pin, 100 MHz, 64 MB DIMMs
3X-MS310-CA	256 MB, Two 200 pin, 100 MHz, 128 MB DIMMs
3X-MS310-DA	512 MB, Two 200 pin, 100 MHz, 256 MB DIMMs

---



---

## Step 3—Storage

---



---

### Step 3a—Internal Storage

- Systems include one 600 MB 32X CD-ROM drive and one 1.44 MB diskette drive in dedicated drive slot.
- Additional internal storage supported:
  - Three 1” hard disk drive bays (including mandatory selection from step 1c)
  - One removable 5.25-inch half-height removable media bay. Note: one 3.5-inch x 1-inch hard disk drive is supported in removable media bay.
  - SCSI adapter and SCSI cable kit are required for SCSI disks or tape

#### IDE disk drives

Order Number	Disk
3X-RE56A-AA	10 GB 5400 RPM IDE hard disk drive

#### SCSI disk drives

Order Number	Disk
DS-RZ2DA-WA	9.1 GB 7200 rpm Ultra SCSI hard disk drive
DS-RZ1DD-WA	9.1 GB 10,000 rpm Ultra SCSI hard disk drive
DS-RZ2EA-WA	18 GB 7200rpm Ultra SCSI hard disk drive

#### SCSI Cable Kit

3X-BN50A-01	SCSI cable kit (includes SCSI cable and SCSI LED cable)
-------------	---

#### Removable Media Devices

TLZ10-LB	TLZ10 DAT 4 mm Internal Tape Drive (requires SN-PBXKP-BA wide to narrow SCSI adapter)
SN-PBXKP-BA	Wide to Narrow SCSI adapter

---



---

## Step 3b—External Storage

### Tabletop DAT Tape Drives

TLZ9L-DB	32/64 GB Tabletop DAT Loader
TKZ9F-TA	5,7,10,14GB 8 mm tbitp, SE SCSI
TLZ9L-VA	32/64 GB DAT loader in Carrier

### Hard Disk Drives supported in StorageWorks Shelf

DS-RZ1DA-VW	9.1 GB 7200 RPM UltraSCSI disk drive
DS-RZ1EA-VW	18.2 GB 7200 RPM UltraSCSI disk drive
DS-RZ1FB-VW	36.4 GB 7200 RPM UltraSCSI disk drive
DS-RZ1DD-VW	9.1 GB 10,000 RPM UltraSCSI disk drive
DS-RZ1ED-VW	18.2 GB 10,000 RPM UltraSCSI disk drive

---

**Controllers/Adapters**

Order Number	Description	Maximum # Supported	
		Tru64 UNIX V4.0E	OpenVMS V7.1-2
KZPBA-CA	PCI-based one port UltraSCSI Single-ended adapter, uses 1 PCI slot. Internal 68-pin and 50-pin HD connectors and external 68-pin HD connector.	2	2
KZPBA-CB	PCI-based one port UltraSCSI Differential adapter, uses 1 PCI slot, external 68-pin HD connector.	2	2
KZPCM-DA	PCI-based two port UltraSCSI Single-ended adapter and 10/100Mbit Ethernet Combo adapter	2	2
BN38C-xx	68-pin HD male to VHDCI male UltraSCSI cable; required for each external UltraSCSI shelf attached to KZPBA-CA/CB adapter.		
KZPAC-AA <sup>1</sup>	PCI-based one port UltraSCSI RAID controller with 4 MB cache memory, includes RAID Array 230/Plus Subsystem software and documentation kit. VHDCI female connector. Tape drives are not supported.		2
KZPAC-CA <sup>1</sup>	PCI-based three port UltraSCSI RAID controller with 4 MB cache memory, includes RAID Array 230/Plus Subsystem Software and documentation kit. Tape drives are not supported. SCSI cable is required for each active port. Requires BN31K-0E for external third port connection.		2
KZPAC-CB <sup>1</sup>	Same as KZPAC-CA with 8 MB cache memory		2
BN37A-xx	VHDCI male to VHDCI male UltraSCSI cable; required for each external UltraSCSI StorageWorks shelf attached to KZPAC. Note: Manufacturing may substitute BN37A-02 cable for certain cabinet configurations		
KZPSC-UB	Cache battery backup for KZPAC controller		
BN31K-0E	SCSI cable/bulkhead assembly kit with KZPAC-CA/CB, allows external connection of one third port.		
KZPAC-SB	SCSI cable/bulkhead assembly kit with two ports for KZPAC-CA/CB, allows external connection of two third ports.		

1. Drives greater than 9 GB are not supported on KZPAC-xx RAID controllers.

---

**Step 4—Graphics Options**

SN-PBXGK-BB	ELSA Gloria Synergy graphics w/8MB SGRAM 1600x1200, 2D/3D graphics accelerator (UNIX V4.0E, OVMD V7.1H2)
-------------	--

---

**Step 5—Monitors**

Graphics monitors other than those listed below can be used if compatible with SVGA graphics ordered with a system.

**Note:** Selection of a video extension cable and a country specific power cord is mandatory for all monitor variants.  
See Step 5a for video extension cable.  
See Step 5b for country specific power cords.

3R-VRQV5-24/11	15" Corporate Series auto-scan color monitor, VGA to 1024 x 768 @ 85 Hz. Requires mandatory selection of country specific power cord for all variants. -24 = Northern Hemisphere without power cord -11 = Southern Hemisphere without power cord
SN-VRQP7-24/23	17" (16.0" viewable image size) professional series auto-scanning color monitor, Trinitron CRT, 0.25 mm aperture grill pitch, VGA to 1280 x 1024 at 75 Hz, TCO 95, MPR-II, Energy Star, attached 1.8 meter video cable. Requires mandatory selection of video extension cable and country specific power cord for all variants. -24 = Northern Hemisphere without power cord -23 = Southern Hemisphere without power cord

---



---

**Step 5—Monitors (continued)**

SN-VRQP1-24/23	21" (19.6" viewable image size) auto-scanning color monitor, Trinitron CRT, 0.25 mm aperture grill pitch, VGA to 1600 x 1200 at 75 Hz NI, TCO 95, Energy Star, includes a 1.8 meter video cable. Requires mandatory selection of video extension cable and country specific power cord for all variants. -24 = Northern Hemisphere without power cord -23 = Southern Hemisphere without power cord
----------------	--

---



---

**Step 5a—Video Extension Cable**

BN39C-02	1.8 meter video extension cable. Order one for each monitor ordered.
----------	---

---



---

**Step 5b—Monitor Power Cords**

BN26J-1K	North America
3X-BN46F-02	Japan, 2.5 meters long, Dentori approved
BN19H-2E	Australia, New Zealand, 2.5 meters long
BN19C-2E	Central Europe, 2.5 meters long
BN19A-2E	UK, Ireland, 2.5 meters long
BN19E-2E	Switzerland, 2.5 meters long
BN19K-2E	Denmark, 2.5 meters long
BN19M-2E	Italy, 2.5 meters long
BN19S-2E	Egypt, India, South Africa, 2.5 meters long
BN18L-2E	Israel, 2.5 meters long

---



---

**Step 6—Keyboards and Power Cords**
**Keyboards**

- Systems ordered in North America include US English keyboard.
- Selection of a country specific keyboard is mandatory for all non North American orders.

Tru64 UNIX Keyboard	OpenVMS Keyboard	Country
SN-LKQ47-AA	LK461-A2	US/UK/English
SN-LKQ47-AB	LK461-AB	Belgian
SN-LKQ47-AC	LK461-AC	Canadian/French
SN-LKQ47-AD	LK461-AD	Danish
SN-LKQ47-AE		UK
SN-LKQ47-AF	LK461-AF	Finnish
SN-LKQ47-AG	LK461-AG	German
SN-LKQ47-AH	LK461-AH	Dutch
SN-LKQ47-AI	LK461-AI	Italian
SN-LKQ97-AJ		Japanese
SN-LKQ47-AK	LK461-AK	Swiss/French
	LK461-AL	Swiss/German
SN-LKQ47-AM	LK461-AM	Swedish
SN-LKQ47-AN	LK461-AN	Norwegian
SN-LKQ47-AP	LK461-AP	French

**Step 6—Keyboards and Power Cords (continued)**

	<b>LK461-AQ</b>	Canadian/English
<b>SN-LKQ47-AR</b>		Latin-American
<b>SN-LKQ47-AS</b>	<b>LK461-AS</b>	Spanish
<b>SN-LKQ47-AT</b>	<b>LK461-AT</b>	Hebrew
<b>SN-LKQ47-AV</b>	<b>LK461-AV</b>	Portuguese
<b>SN-LKQ47-AX</b>		BHCSY
<b>SN-LKQ47-BA</b>		International
<b>SN-LKQ47-BH</b>	<b>LK461-BH</b>	Greek
<b>SN-LKQ47-BI</b>		Taiwanese
<b>SN-LKQ47-BK</b>		Korean
	<b>LK461-BL</b>	Romanian
<b>SN-LKQ47-BP</b>	<b>LK461-BP</b>	Polish
<b>SN-LKQ47-BQ</b>	<b>LK461-BQ</b>	Hungarian
<b>SN-LKQ47-BR</b>		Arabic
<b>SN-LKQ47-BT</b>	<b>LK461-BT</b>	Cyrillic
<b>SN-LKQ47-BU</b>	<b>LK461-BU</b>	Turkish
<b>SN-LKQ47-BV</b>	<b>LK461-BV</b>	Czech
	<b>LK461-BW</b>	Turkish-French
	<b>LK461-BY</b>	Yugoslavian
<b>SN-LKQ47-CB</b>		Thai
<b>SN-LKQ47-CV</b>		Simplified Chinese
<b>SN-LKQ47-CZ</b>	<b>LK461-CZ</b>	Slovak

**Pedestal Power Cords**

- Systems ordered in North America include one BN26J-1K 120 V North American power cord.
- Selection of a country specific power cord is mandatory for all non North American orders.

<b>3X-BN46K-2E</b>	North America, 2.5 meters long
<b>3X-BN46G-02</b>	Japan, 2.5 meters long, Dentori approved
<b>BN19H-2E</b>	Australia, New Zealand, 2.5 meters long
<b>BN19C-2E</b>	Central Europe, 2.5 meters long
<b>BN19A-2E</b>	UK, Ireland, 2.5 meters long
<b>BN19E-2E</b>	Switzerland, 2.5 meters long
<b>BN19K-2E</b>	Denmark, 2.5 meters long
<b>BN19M-2E</b>	Italy, 2.5 meters long
<b>BN19S-2E</b>	Egypt, India, South Africa, 2.5 meters long
<b>BN18L-2E</b>	Israel, 2.5 meters long

**Rackmount Power Cords**

<b>BN20Z-4E</b>	4.5m rackmount power cord for North America
<b>3X-BN46L-4E</b>	4.5 m rackmount power cord for non-NA
<b>3X-BN46D-4E</b>	4.5m rackmount power jumper cord, Japan, Dentori

---



---

## Step 7—Cabinet Enclosures and Accessories

- DS10 systems ship with a rackmount kit included.

---

### M-series Top Gun Blue Cabinet Enclosures are available in three sizes:

- 43” high Cabinet Enclosure (H9A11-xx) 20U or 35.0” of usable vertical space.
- 67” high Cabinet Enclosure (H9A10-xx) 31U or 54.2” of usable vertical space.
- 79” high Cabinet Enclosure (H9A15-xx) 38U or 66.5” of usable vertical space.

### Cabinet Configuration Chart

Cabinet Enclosure	Mounting Kit	Cabinet Height and Space		System	Shelves	Ballast Kit
H9A11-MC/MD	Included in Rackmount System	35.0 inches	20U	1	0	1
				2	6	1
				3	4	0
				4 or 5	2	0
				6	0	0

Cabinet Enclosure	Mounting Kit	Height	Space	System	Shelves	Ballast Kit
H9A10-MC/MD	Included in Rackmount System	54.2 inches	31U	1	0	2
				2	0	2
				3, 4 or 5	6	1
				6	6	0
				7	4	0
				8 or 9	2	0
				10	0	0

Cabinet Enclosure	Mounting Kit	Height	Space	System	Shelves	Ballast Kit
H9A15-MC/MD	Included in Rackmount System	66.5 inches	38U	1	N/A	N/A
				2	0	2
				3	6	2
				4	6	1
				5 or 6	6	1
				7 or 8	6	0
				9 or 10	4	0
				11	2	0
				12	0	0

### M-series Cabinet Enclosure Options

M-series Cabinet Enclosures require the **mandatory** selection of:

- H9A11, H9A10, or H9A15 Cabinet 120V or 240V variant
- Cabinet front door based on cabinet height (optional on H9A11 cabinet)
- Factory Integration
- Ballast kits as required

---

**Step 7—Cabinet Enclosures and Accessories (continued)**
**Cabinet Enclosures**

<b>H9A11-MC</b>	120 V one 24 A controller with 10 NEMA 5-15R outlets, input power plug NEMA L5-30P, Americas, Asia Pacific. Includes rear door, 1 H7600-AA power distribution unit, trim kit, and front filler bezel kit
<b>H9A11-MD</b>	240 V one 16 A controller with 12 IEC C13 outlets, input power plug IEC 309, 16A, Europe Includes rear door, 1 H7600-DB power distribution unit, trim kit, and front filler bezel kit
<b>H9A10-MC</b>	120 V dual 24 A controller, each with 10 NEMA 5-15R outlets, input power plug NEMA L5-30P, Americas, Asia Pacific. Includes rear door, top fan tray, and 2 H7600-AA power distribution units
<b>H9A10-MD</b>	240 V dual 16 A controller, each with 12 IEC C13 outlets, input power plug IEC 309, 16A, Europe. Includes rear door, top fan tray, and 2 H7600-DB power distribution units
<b>H9A15-MC</b>	120 V dual 24 A controller, each with 10 NEMA 5-15R outlets, input power plug NEMA L5-30P, Americas, Asia Pacific. Includes rear door, top fan tray, and 2 H7600-AA power distribution units
<b>H9A15-MD</b>	240 V dual 16 A controller, each with 12 IEC C13 outlets, input power plug IEC 309, 16A, Europe. Includes rear door, top fan tray, and 2 H7600-DB power distribution units

For custom integration of systems, options, and additional Compaq and third party devices, or for other cabinets, doors, and trim kits of a different color, contact Compaq CustomSystems at 1-800-AT-COMPAQ (1-800-282-6672), or contact your local authorized Compaq Certified Integration Partner

**Cabinet Front Door**

<b>H9C10-TF</b>	Top Gun Blue front door for H9A10-MC/MD Cabinet Enclosure
<b>H9C15-TF</b>	Top Gun Blue front door for H9A15-MC/MD Cabinet Enclosure
<b>H9C11-EB<sup>1</sup></b>	Top Gun Blue front door for H9A11-MC/MD Cabinet Enclosure

180 Selection of front door for H9A11 cabinet is optional, cabinet includes front trim kit and filler bezel kit.

**Shelves supported in M-series Cabinets with front doors (H9A10/M9A15)**

<b>BA36R-RC</b>	StorageWorks UltraSCSI single bus, single-ended shelf with 180 W power supply and RETMA mounting kit
<b>BA36R-RD</b>	StorageWorks UltraSCSI split bus, single-ended shelf with 180 W power supply and RETMA mounting kit
<b>BA35R-MR</b>	StorageWorks controller shelf with RETMA mounting kit and NEMA power for H9A10-MC, H9A15-MC cabinets (Americas, Asia Pacific) Order BN30B-02 power cord for H9A10-MD, H9A15-MD cabinets (Europe)
<b>CK-BA35X-HH</b>	180 W power supply

**Shelves supported in M-series Cabinets with trim kit (H9A11)**

<b>BA35C-AA</b>	StorageWorks UltraSCSI single bus, single-ended shelf with 180 W power supply and RETMA mounting kit—blue bezel
<b>BA35C-BA</b>	StorageWorks UltraSCSI split bus, single-ended shelf with 180 W power supply and RETMA mounting kit—blue bezel

**Factory Integration**

<b>YS-ASCAA-AA</b>	Factory Integration of systems and storage devices assembled and configured in cabinet enclosure for H9A10/15 cabinet enclosures.
<b>YS-ASCAA-AB</b>	Factory Integration of systems and storage devices assembled and configured in cabinet enclosure for H9A11 cabinet enclosures.

---



---

## Step 7—Cabinet Enclosures and Accessories (*continued*)

### Ballast Kit

Ballast is dead weight that is added to a cabinet at specific locations for specific configurations to meet safety regulations for installation, operation, and service. See Cabinet Configuration Chart for ballast kit requirements.

<b>H9C10-MC</b>	Two 35-40 lbs. steel plates
-----------------	-----------------------------

For additional information on M-series Cabinet Enclosures visit [www.digital.com/alphaserver/products/m-series.html](http://www.digital.com/alphaserver/products/m-series.html)

### Rackmount System Management Station for M-Series Cabinets

The Rackmount System Management Station for the M-Series Cabinets consists of the following items:  
a switch, keyboard + mouse, cables and flat panel monitor.

These components to be configured and rackmounted in your cabinet at the factory, call CustomSystems. Otherwise, the components will need to be assembled into the M-Series cabinet on-site.

For each rack, order:

- One console switch (2T-AIOSW-B4 or 2T-AIOSW-B8)
- One Flat Panel Display (332662-001)
- One keyboard with shelf (2T-IODEV-LB)
- One rear extender bracket for the Flatpanel display (2T-QH915-03)
- One rear extender bracket for the Console Switch (2T-QH915-03)
- One switch to server cable (2T-ACCSW-12) (Required: 1 per server)

Part Number	Description	U Height	Note
2T-AIOSW-B4	4 port switch	1U	Requires **
2T-AIOSW-B8	8 port switch	1U	Requires **
332662-001	Retractable 14.5" opal Flat Panel Display	2U	Flips up after being removed from cabinet. Requires **
2T-IODEV-LB	Blue keyboard with shelf	1U	Self-contained unit
**2T-QH915-03	One rear extender bracket secures both the Flat Panel Display and a switch	N/A	Attached to rear rails for 25" depth mounting
2T-ACCSW-12	12' switch to server cable	N/A	One required per system

### Compaq CustomSystems Support

Cabinets containing systems and storage must be assembled by qualified assemblers: Compaq Manufacturing, Compaq's Customs Systems Group, or an authorized Compaq Certified Integration Partner.

For custom integration of systems, options, and additional Compaq and third party devices, or for other cabinets, doors, and trim kits of a different color, contact Compaq CustomSystems at 1-800-AT-COMPAQ (1-800-282-6672), or contact your local authorized Compaq Certified Integration Partner.

---



---

## Step 8—Network Options

- Systems include dual embedded 10/100 BaseT ethernet ports (BN25G-xx cable must be ordered separately).
- Additional ethernet ports can be added using available PCI slots

Order Number	Description	Maximum # Supported	
		Tru64 UNIX V4.0E	OpenVMS V7.1-2
DE500-BA	PCI-based 10/100-Mbit 1 port Fast Ethernet controller (Twisted Pair)	2	2
DE504-BA	PCI-based 10/100-Mbit 4 Port Fast Ethernet controller (Twisted Pair)	2	2
BN25G-xx	Cable for 10BaseT Twisted Pair connection		
DE500-FA	PCI-based 10/100-Mbit Fast Ethernet controller (MMF)_	2	2
BN34B-xx	SC-SC Dual FO cable, mm, pp. xx = length in meters		
DEGPA-SA	PCI to GbE SX Adapter	2	2

---



---

## Step 9—Software

---



---

### Step 9a—Tru64 UNIX Software

- Tru64 UNIX systems include Tru64 UNIX base license, Server Extension, Internet AlphaServer Software kit and Unlimited User License.
- Tru64 UNIX systems require operating system media and documentation for first system on site.

#### Tru64 UNIX Media and Documentation—required for first system on site

QA-MT4AA-H8	Tru64 UNIX Media & Documentation kit
QA-MT4AA-GZ	Tru64 UNIX Full Documentation kit

#### TruCluster Available Server License

QL-05SAE-AA	TruCluster Available Server License
-------------	-------------------------------------

#### Tru64 UNIX Layered Products CD-ROM

QA-054AA-H8	Layered products media and documentation for Tru64 UNIX on CD-ROM
-------------	---

#### DECnet for Tru64 UNIX

QL-MTJAE-AA	DECnet/OSI end-system license for Tru64 UNIX
QL-MTKAE-AA	DECnet/OSI extended function license for Tru64 UNIX

#### Open3D for Tru64 UNIX CD-ROM

QA-0AFAA-H8	Open3D for Tru64 UNIX on CD-ROM, includes graphics drivers
-------------	--

- OpenVMS Packaged and Base systems require operating system media and documentation for first system on site.
- Software Processor Code = E

---

**Step 9b—OpenVMS Software**
**OpenVMS Media and Documentation**

QA-MT1AD-H8	OpenVMS V7.1-1H1 Media on CD-ROM
QA-MT1AA-H8	OpenVMS V7.1 media and on-line documentation on CD-ROM
QA-001AA-GZ	OpenVMS hardcopy documentation
QA-03XAA-H8	Layered products media and documentation for OpenVMS on CD-ROM

**Open3D for OpenVMS CD-ROM**

QA-0ADAA-H8	Open3D for OpenVMS on CD-ROM, includes graphics drivers
-------------	---

**OpenVMS Concurrent Use Licenses**

- OpenVMS Concurrent Use Licenses are not specific to a single system and can be moved between systems at user discretion. OpenVMS Concurrent Use Licenses can also be shared in a mixed OpenVMS VAX and OpenVMS Alpha Cluster. **The OpenVMS traditional unlimited use license is system specific and can only be used on one single system at a time. It can not be shared between systems or in an OpenVMS VAX or OpenVMS Alpha Cluster.**

QL-MT3AA-3B	OpenVMS Concurrent Use 1-user license
QL-MT3AA-3C	OpenVMS Concurrent Use 2-user license
QL-MT3AA-3D	OpenVMS Concurrent Use 4-user license
QL-MT3AA-3E	OpenVMS Concurrent Use 8-user license
QL-MT3AA-3F	OpenVMS Concurrent Use 16-user license
QL-MT3AA-3G	OpenVMS Concurrent Use 32-user license
QL-MT3AA-3H	OpenVMS Concurrent Use 64-user license
QL-MT3AA-3J	OpenVMS Concurrent Use 128-user license
QL-MT3AA-3K	OpenVMS Concurrent Use 256-user license
QL-MT2AE-AA	OpenVMS traditional unlimited user license

---

**Step 10—Hardware and Software Supplemental Services**
**Hardware Supplemental Services**

FM-MK4HR-36	3 YR 5X9/4HR, AS1000/AlphaServer DS10
FM-MK4HR-60	5 YR 5X9/HR, AS1000 /AlphaServer DS10
FM-MK512-36	3 YR 5X12/4HR, AS1000 /AlphaServer DS10
FM-MK512-60	5 YR 5X12/4HR, AS1000 /AlphaServer DS10
FM-MK616-36	3 YR 6X16/4HR, AS1000/AlphaServer DS10
FM-MK616-60	5 YR 6X16/4HR, AS1000/AlphaServer DS10
FM-MK724-36	3 YR 7X24/4HR, AS1000/AlphaServer DS10
FM-MK724-60	5 YR 7X24/4HR, AS1000/AlphaServer DS10
FM-MKXHW-60	YR 4-5 5X9/N.D., AS1000/AlphaServer DS10

**Software Supplemental Services**

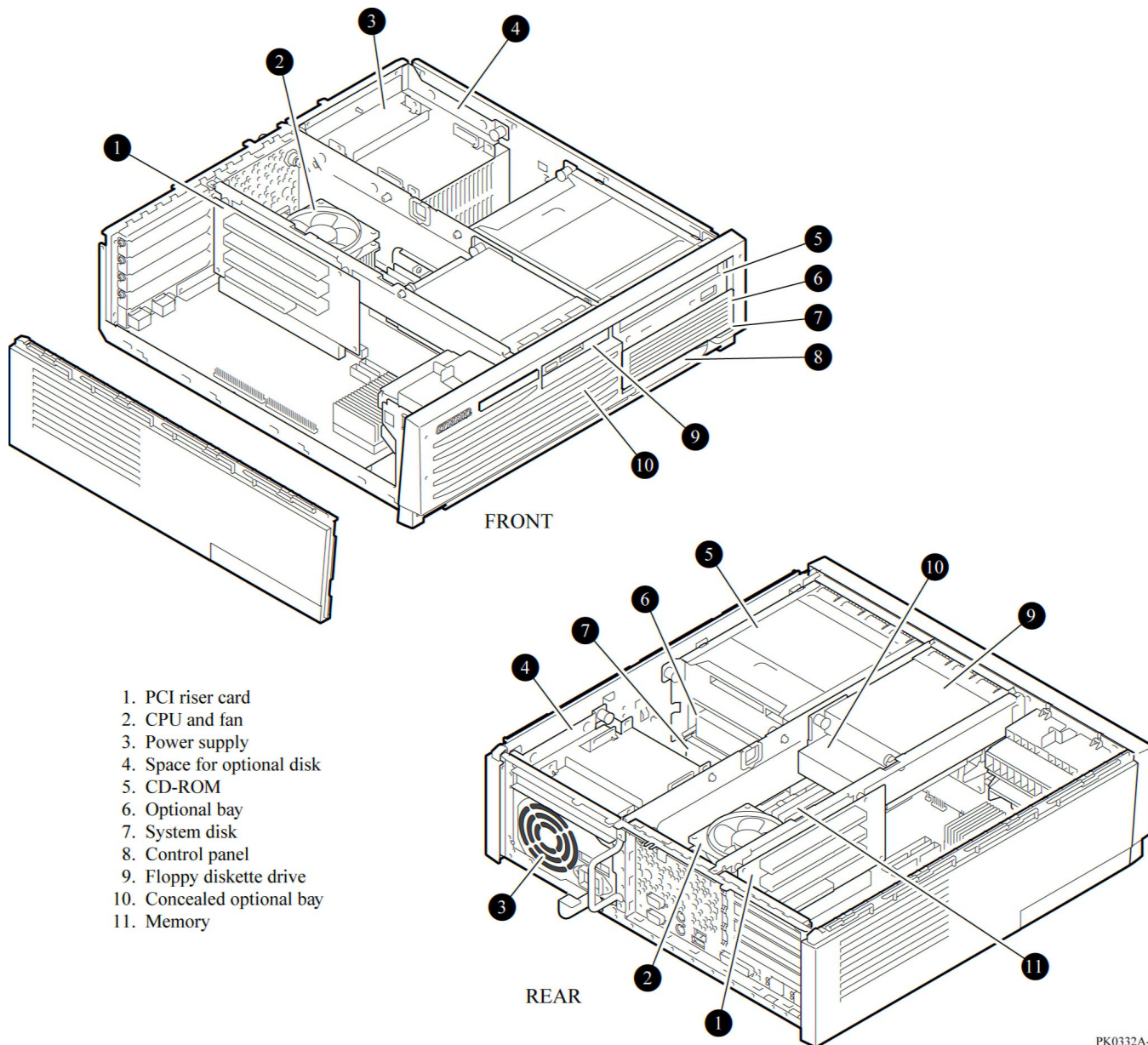
FM-D10V9-12	1 yr, DS10 OpenVMS Brz9x5
FM-D10V9-36	3 yr, DS10 OpenVMS Brz9x5
FM-D10V9-60	5 yr, DS10 OpenVMS Brz9x5
FM-D10VS-12	1 yr, DS10 OpenVMS Brz24x7
FM-D10VS-36	3 yr, DS10 OpenVMS Brz24x7

Software Supplemental Services (*continued*)

<b>FM-D10VS-60</b>	5 yr, DS10 OpenVMS Brz24x7
<b>FM-D10VN-12</b>	1 yr, DS10 OpenVMS Node
<b>FM-D10VN-36</b>	3 yr, DS10 OpenVMS Node
<b>FM-D10VN-60</b>	5 yr, DS10 OpenVMS Node
<b>FM-D10U9-12</b>	1 yr, DS10 Tru64 UNIX Brz9x5
<b>FM-D10U9-36</b>	3 yr, DS10 Tru64 UNIX Brz9x5
<b>FM-D10U9-60</b>	5 yr, DS10 Tru64 UNIX Brz9x5
<b>FM-D10US-12</b>	1 yr, DS10 Tru64 UNIX Brz24x7
<b>FM-D10US-36</b>	3 yr, DS10 Tru64 UNIX Brz24x7
<b>FM-D10US-60</b>	5 yr, DS10 Tru64 UNIX Brz24x7
<b>FM-D10UN-12</b>	1 yr, DS10 Tru64 UNIX Node
<b>FM-D10UN-36</b>	3 yr, DS10 Tru64 UNIX Node
<b>FM-D10UN-60</b>	5 yr, DS10 Tru64 UNIX Node

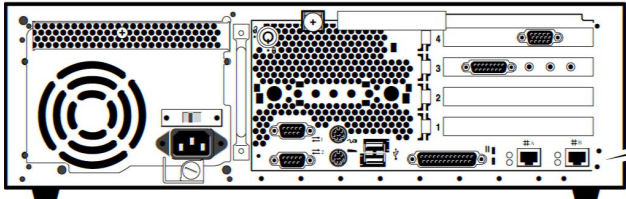
**Systems Specifications**

<b>Height</b>	5 in (13 cm)
<b>Width</b>	17 in (43 cm)
<b>Depth</b>	18 in (46 cm)
<b>Weight (fully loaded)</b>	36 lb (16.3 kg)

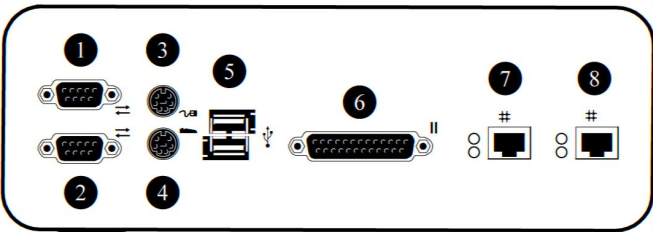


PK0332A-99

I/O PORTS



PK0334-99



- 1. COM1 and RMC port
- 2. COM2 port
- 3. Mouse
- 4. Keyboard
- 5. USB ports
- 6. Parallel port
- 7. Ethernet A
- 8. Ethernet B